

Silicon Pressure Sensor Datasheet

1. General Introduction

M0101 is an Absolut type silicon pressure sensor especially designed for applications requiring pressure measurement from 0 to 15 Bar. The pressure sensor is based on the industry-recognized piezo-resistive technology featuring long-term stability and EMC robustness. .

2. Features

- Operation range: 0~15Bar
- Absolut type sensor
- Constant current or constant voltage drive



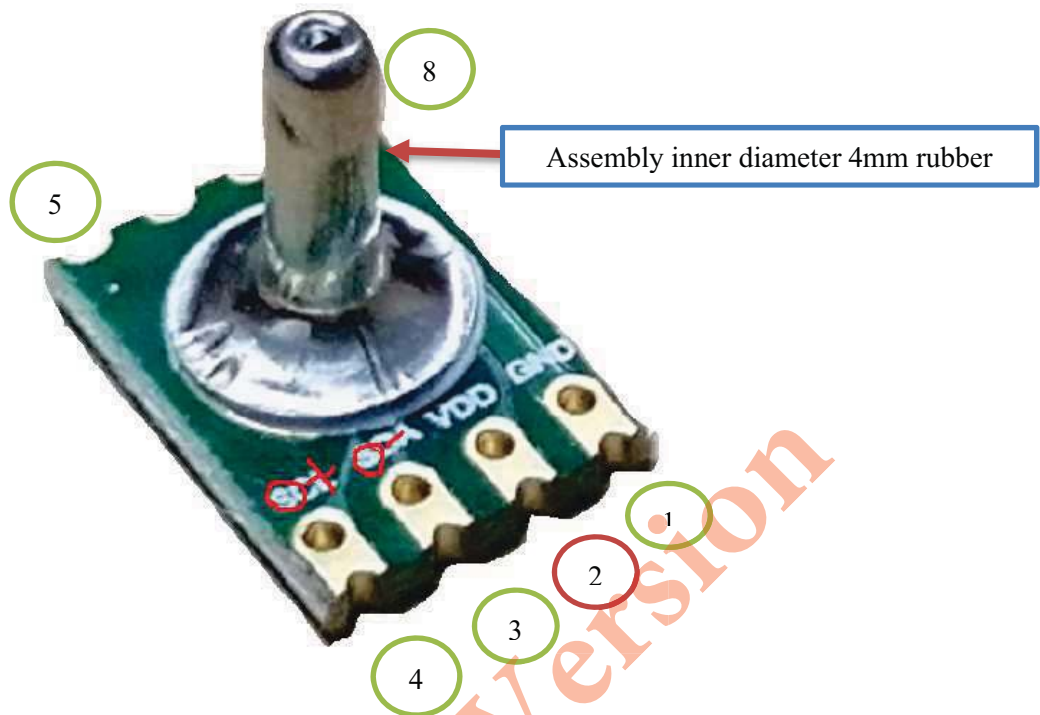
3. Applications

- Pump pressure measurement
- Industrial control

4. Specifications

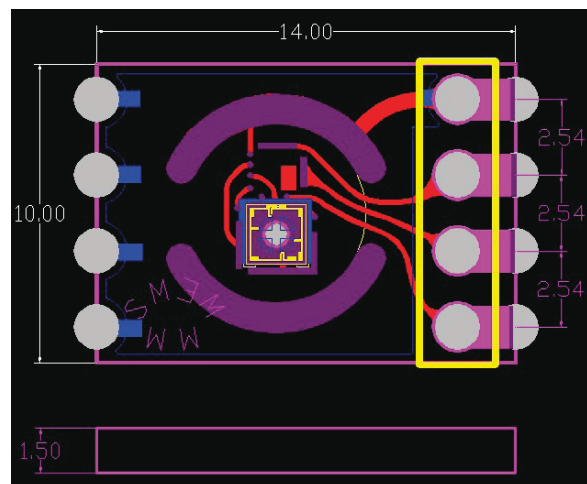
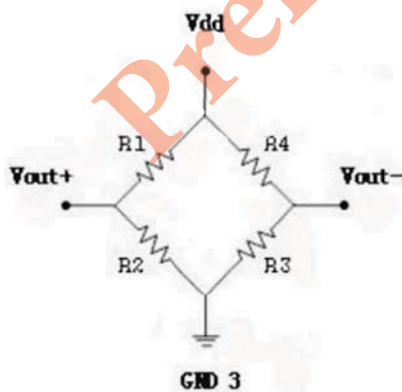
Parameter	Symbol	Condition	Min.	Typ.	Max.	Unit
Operation voltage	Vin		—	5	10	V
Operation current	I0		—	1	2	mA
Bridge impedance			4.5	5.0	5.5	kΩ
Pressure range			0		15	Bar
Full scale span	FS%	Vin=5V	70	100	120	mV
Offset		Vin=5V	15		15	mV
Linearity			-0.3	±0.1	+0.3	%FS
TC span		Constant voltage	-0.25	-0.20	-0.15	%FS/°C
		Constant current	-0.1	±0.05	+0.1	%FS/°C
TC offset			-0.08	-0.05	+0.08	%FS/°C
Burst pressure			45	-	60	Bar
Temperature range			-40	25	+85	°C
Storage temperature			-40	-	+125	°C

5 · Pads layout and definition



Pads Definition

Pin#	Name	Description
1	GND	Ground pad 1
2	Vin	Power supply in
3	Vout-	Analog output voltage -
4	Vout+	Analog output voltage +
5,6,7,8	NC	Welding fixation, no electric performance



6. Packaging instructions

- 6.1 50pcs/pipe, TDB pcs/box, TDB pcs/case;
- 6.2 Vibration-proof packaging.
- 6.3 MOQ: 5K;

Preliminary Version